

$$\begin{aligned}
 1. \quad & 34 + 45 + 55 + 66 \\
 & = \underline{34 + 66} + \underline{45 + 55} \\
 & = 100 + 100 \\
 & = 200
 \end{aligned}$$

$$\begin{aligned}
 2. \quad & \underline{2019 - 2018} + \underline{2017 - 2016} + \underline{2015 - 2014} \\
 & = 1 + 1 + 1 \\
 & = 3
 \end{aligned}$$

$$\begin{aligned}
 3. \quad & \underline{2 \times 5} + \underline{8 \times 0} \\
 & = 10 + 0 \\
 & = 10
 \end{aligned}$$

4.



1 條

$$5. \quad 2 \xrightarrow{\times 2} 4 \xrightarrow{\times 2} 8 \xrightarrow{\times 2} 16 \xrightarrow{\times 2} 32, 64, 128, 256$$

$$\begin{aligned}
 6. \quad & \text{今年年齡和: } 25 + 20 = 45 \text{ (歲)} \\
 & \text{每年增加: } 1 + 1 = 2 \text{ (歲)} \\
 & \text{需多少年總和是 } 55: (55 - 45) \div 2 \\
 & \quad = 5 \text{ (年)}
 \end{aligned}$$

7. 5. 年齡差不變

8. 週期: 甲, 乙, 丙

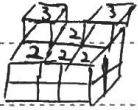
$$20 \div 3 = 6 \dots 2, \text{ 餘 } 2 \text{ 即是 } 乙.$$

9.



$$10 - 1 = 9 \text{ 段}$$

10.



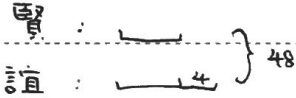
共： $2 + 2 + 2 + 2 + 3 + 3 = 14$ (個)

11.

$10 \text{ (佳)} 15$

共： $10 + 15 + 1 = 26$ (人)

12.



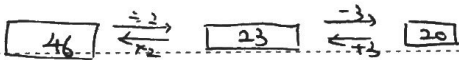
誼： $(48 + 4) \div 2 = 26$ (粒)

13.

$$\begin{array}{r} \begin{array}{ccc} 1 & 2 & 3 \\ A & B & C \end{array} \\ + \quad \begin{array}{ccc} & 2 & 3 \\ & B & C \end{array} \\ \hline 1 \quad 4 \quad 6 \end{array}$$

$A + B + C = 1 + 2 + 3 = 6$

14.



$20 + 3 = 23$

$23 \times 2 = 46$ (粒)

15.

鉛：○， 頂：△， 間：□

$0 = \Delta + \Delta + \Delta$

$\Delta + \Delta = \square + \square + \square + \square + \square$

$$\begin{aligned} 0 + 0 + 0 + 0 &= \underline{\Delta + \Delta + \Delta} + \underline{\Delta + \Delta + \Delta} + \underline{\Delta + \Delta + \Delta} + \underline{\Delta + \Delta + \Delta} \\ &= (\square + \square + \square + \square + \square) + (\square + \square + \square + \square + \square) + (\square + \square + \square + \square + \square) + \\ &\quad (\square + \square + \square + \square + \square) + (\square + \square + \square + \square + \square) + (\square + \square + \square + \square + \square) \end{aligned}$$

⇒ 30 把

16. $10 : 10$

$20 : 20$

$30 : 10 + 20$

$40 : x$

$50 : 50$

$60 : 10 + 50$

$70 : 20 + 50$

$80 : 10 + 20 + 50$

$90 : x$

$100 : 100$

$110 : 10 + 100$

$120 : 20 + 100$

$130 : 10 + 20 + 100$

$140 : x$

$150 : 50 + 100$

$160 : 10 + 50 + 100$

$170 : 20 + 50 + 100$

$180 : 10 + 20 + 50 + 100$

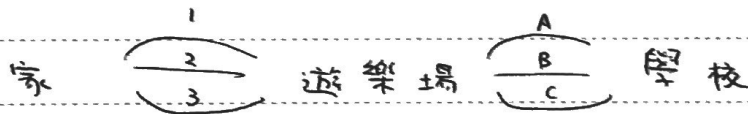
$\Rightarrow 15$ 個

17. 共 : $5 + 10 + 18 = 33$ 本

平均每層 : $33 \div 3 = 11$ 本

需移動 : $11 - 10 = 1$ 本

18.



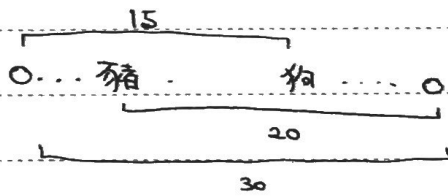
可走的路 : $1A, 1B, 1C,$

$2A, 2B, 2C,$

$3A, 3B, 3C$

\Rightarrow 共 9 種

19.



中間有 : $20 + 15 - 2 - 30$

$= 3$ (隻)

20.

奇數行 奇個位 \rightarrow 奇數

奇數行 偶個位 \rightarrow 偶數

偶數行 奇個位 \rightarrow 偶數

偶數行 偶個位 \rightarrow 奇數

666 行 888 個位 \Rightarrow 奇數
(偶) (偶)